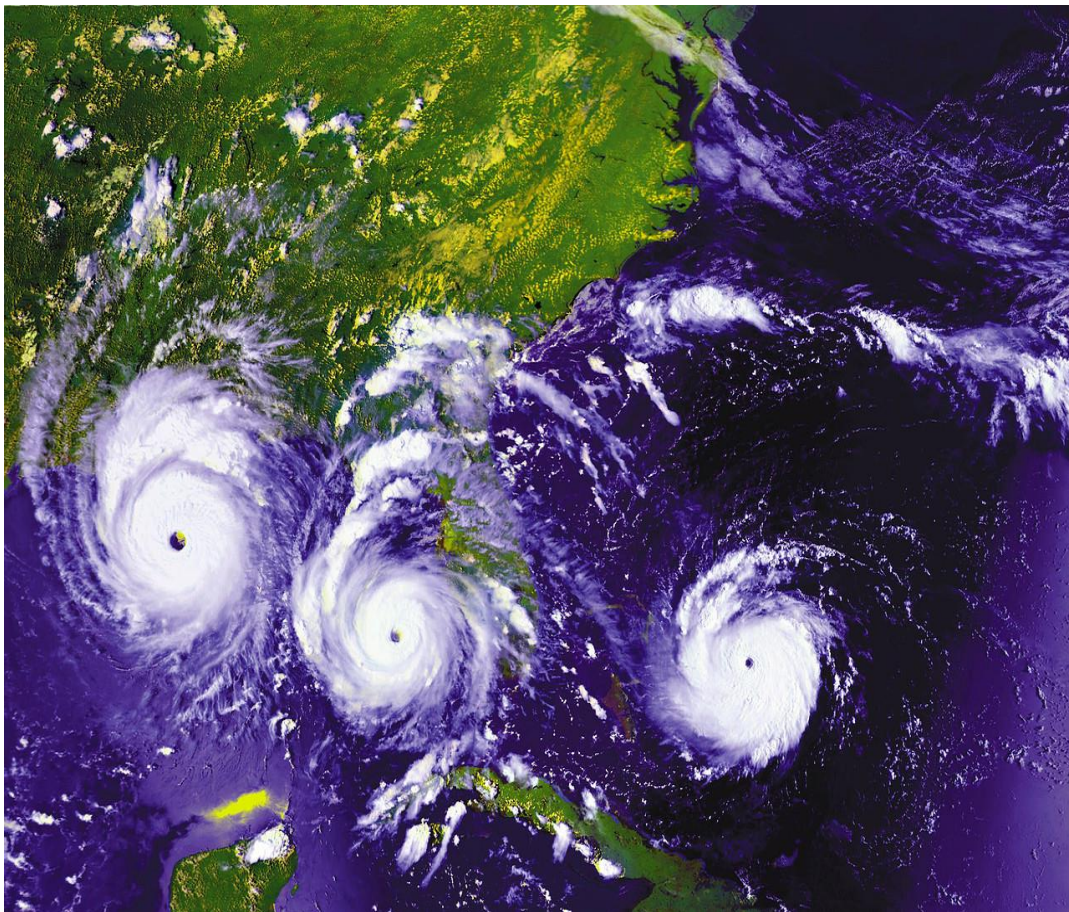




# Hurricane Preparedness Guide For Residents

Updated 06/01/22



## **INTRODUCTION**

The Positano Place Hurricane Preparedness Guide is a compilation of advice from experts such as the National Hurricane Center, American Red Cross and Emergency Management Offices. Experts believe the best way to cope with a hurricane is to prepare a plan in advance.

The purpose of the Hurricane Preparedness Guide is to have a written procedure for Positano Place which can be implemented when a hurricane is threatening the Collier County area and implemented immediately in the event a disaster strikes the area. A guide will save valuable time in making decisions and preparations for an impending disaster and in the repair process afterward.

These Owner guidelines will be updated annually and published on our website [www.positanoplaceatnaples.com](http://www.positanoplaceatnaples.com)

This document is intended to be a living document, improved by experience and updates which shall be noted in the Guide as they occur. The Guide will be reviewed and updated annually at the beginning of hurricane season.

After Hurricane Irma the biggest concern we experienced was that owners could not reach us to report on the extent of damage to Positano. We have now purchased a generator to allow us to get phones and computers operational without FPL power. However, homeowners need to understand that after a devastating hurricane like Irma, the staff is too busy taking care of emergency situations and cannot be personally informing 330 unit owners of the damage at Positano.

Absentee owners need to understand that it is their responsibility to have a home-watch person or someone they know in Naples that can access their property in order to provide them with a damage assessment.

Thank you,  
Positano Boards, Management & Staff



# Positano Place

## 2021 HURRICANE PREPERATION Resident Tips



### GOVERNEMENT GUIDELINES URGE RESIDENTS TO BE ABLE TO SURVIVE ON THEIR OWN FOR 7 DAYS

Hurricane Season starts June 1<sup>st</sup> and it is important that all Florida Residents understand that certain preparations do need to take place. We all need to be aware of the exposure as well as prepare for a disaster. Please read the following basic tips that will be helpful in preparing for a Hurricane/Disaster:

**Remember the Essentials:** Water, Food (canned, dry foods and high calorie bars), Personal first-aid kit, battery-powered flashlight, radio (with extra batteries).

**Secure Vital Documents:** Driver's license, personal identification, maps, cash on hand, important documents (Wills, insurance policies, contracts, deeds, family birth records, insurance cards, SSN cards, Important phone numbers for family, doctors, friends)

**Secure Unit:** It is critical to remove all furniture, plants and other accessories on your Lanai. These can become projectiles during a windstorm event. Lock both sides of your sliding glass doors and latch all windows.

**If you are on medication,** make sure you get refills as soon as restrictions allow. A storm may disrupt your ability to get refills for days, if not weeks. If you have special medical needs, register now with your appropriate county agency.

**If you own pets** and plan to evacuate, remember most shelters do not accept pets. Those that do, require proof of vaccinations. Call in advance for availability, or look in advance for a pet friendly hotel or motel.

**If you have children,** explain to them what to expect in the way of noise, rain, and wind. Note that they will be safe if proper preparations are made. Have lots of toys and games available in case you're stuck in one place for an extended period.

**If you live in an evacuation zone;** write down the locations of nearby shelters, or identify a friend or family member you can stay with. Please notify the property manager of your plans and leave a contact number that you can be reached in case of emergency, such as property damage.

## **Important Telephone Numbers and Websites**

- General Emergency .....911  
*Note: During a hurricane may not be available*
- Collier County Emergency Management.....239-252-3600  
*Comprehensive Information for Collier County*  
Website: [www.collierem.com](http://www.collierem.com)
- American Red Cross.....239-596-6868 (local chapter) 239-278-3401  
Website: [www.colliercountyredcross.org](http://www.colliercountyredcross.org)
- FEMA (Federal Emergency Management Agency).....800-621-3362, 800-462-7585  
Website: [www.fema.gov](http://www.fema.gov)
- Florida Power & Light.....800-226-3545  
FPL Local Customer Service.....239-262-1322  
Website: [www.fpl.com](http://www.fpl.com)
- Collier County Sheriff – Non-Emergency .....239-774-4434  
Non-Emergency.....239-252-9300
- Naples Fire Rescue – Non-Emergency .....239-774-2800  
Website: [www.greaternaplesfire.org](http://www.greaternaplesfire.org)
- Collier County Water Division .....239-252-6245  
Toll Free.....888-377-0001
- Collier County Schools.....239-377-0001
- Comcast.....800-934-6489
- Collier County Contractor Licensing.....239-252-2431  
Toll Free.....850-487-1395
- National Hurricane Center Website: [www.nhc.noaa.gov](http://www.nhc.noaa.gov)
- Naples Daily News Hurricane Coverage Website: [www.naplesnews.com](http://www.naplesnews.com)
- Naples Post Office.....239-435-2146  
Toll Free.....800-275-8777
- Preparedness for People w/Disabilities [www.disabilityresources.org/DISASTER.html](http://www.disabilityresources.org/DISASTER.html)
- Domestic Animal Services.....239-252-7387
- Code Enforcement .....239-252-2440  
.....239-213-5030
- Consumer Assistance Hotline.....877-693-5236
- Insurance Commissioner.....850-413-3140

- ☐ Health Department .....239-252-7300, 239-389-5050
- ☐ Price Gouging Hotline .....866-966-7226

## **Disaster Supply List**

- ☐ **Water** - at least 1 gallon daily per person for 3 to 7 days
- ☐ **Food** - at least enough for 3 to 7 days
  - non-perishable packaged or canned food / juices
  - foods for infants or the elderly
  - snack foods
  - non-electric can opener
  - cooking tools / fuel
  - paper plates / plastic utensils
- ☐ **Blankets / Pillows, etc.**
- ☐ **Clothing** - seasonal / rain gear/ sturdy shoes
- ☐ **First Aid Kit / Medicines / Prescription Drugs**
- ☐ **Special Items** - for babies and the elderly
- ☐ **Toiletries / Hygiene items / Moisture wipes**
- ☐ **Flashlight / Batteries**
- ☐ **Radio** - Battery operated and NOAA weather radio
- ☐ **Telephones** - Fully charged cell phone with extra battery and a traditional (not cordless) telephone set. Note that some of the gym equipment have a USB port that will charge your phone during your workout.
- ☐ **Cash (with some small bills) and Credit Cards** - Banks and ATMs may not be available for extended periods
- ☐ **Keys**
- ☐ **Toys, Books and Games**
- ☐ **Important documents** - in a waterproof container or watertight resealable plastic bag
  - insurance, medical records, bank account numbers, Social Security card, etc.
- ☐ **Tools** - keep a set with you during the storm
- ☐ **Vehicle fuel tanks filled**

**Pet care items**

- proper identification / immunization records / medications
- ample supply of food and water
- a carrier or cage
- muzzle and leash

## **Hurricane Terminologies**

### **Hurricane Season**

June 1<sup>st</sup> to November 30<sup>th</sup>

### **Hurricane Watch**

Weather bulletin warning of hurricane conditions which pose a threat to the coastal or inland communities. This is the first notice; means the eye of a hurricane may threaten within 36 hours. Preparations should begin for coping with storm impacts and possible evacuation.

### **Hurricane Warning**

A warning has been issued that the dangerous effects of a hurricane are expected in a specified area in 24 hours or less.

#### **Category One Hurricane**

Winds of 73 to 95 mph. Damages to include: low-lying escape routes located inland will be cut off by rising water two to four hours before the arrival of the center of the hurricane; marinas flooded; some damage to windows, doors and roofing is expected; major damage to mobile homes; storm surge 5 to 7 feet above normal.

#### **Category Two Hurricane**

Winds of 96 to 110 mph. Damages to include: low-lying escape routes located inland will be cut off by rising water two to four hours before the center of the hurricane arrives; mobile homes expected to be destroyed; some structural damage to small buildings; serious coastal flooding; storm surge 8 to 10 feet above normal.

#### **Category Three Hurricane**

Winds of 111 to 130 mph. Damages to include: low-lying escape routes located inland will be cut off three to four hours before the center of the hurricane arrives; mobile homes destroyed; some structural damage to small buildings; serious coastal flooding; storm surge 11 to 12 feet above normal.

#### **Category Four Hurricane**

Winds of 131 to 150 mph. Low-lying escape routes located inland will be cut off three to four hours before the center of the hurricane arrives. Major damage to lower floors of buildings adjacent to shorelines due to wave battering and flooding. Collapse of roofs of many small residences. Storm surge 13 to 18 feet above normal.

#### **Category Five Hurricane**

Winds more than 156 mph. Low-lying escape routes located inland will be cut off three to four hours before the center of the hurricane arrives. Small buildings will be overturned or blown away. Extensive shattering of glass in windows and doors. Collapse of roofs of many residential and industrial buildings. Some buildings will collapse. Storm surge greater than 18 feet above normal.

## **Storm Surge**

An abnormal rise in sea level accompanying a hurricane or other intense storm. A surge may be up to 20 feet high.

## **Pre-Hurricane Season Planning**

At least 60 days prior to the beginning of hurricane season (June 1<sup>st</sup>), it is imperative that each and every Association Member prepare a hurricane plan for their entire household - an outline that specifies what every member of the household will do before, during and after a hurricane. General guidelines for preparing your hurricane plan are as follows:

1. Gather a two-week supply of all items listed in "Attachment A - Suggested Owners Hurricane Supply Checklist".
2. Make arrangements in advance for where your household will stay during a hurricane - at home, a friend's home, a shelter or a hotel. Make arrangements for a back-up location as well. Make sure everyone knows the location, address and phone number.
3. Ask an out-of-town relative or friend to be your emergency contact, and make sure everyone knows that person's phone number. Tell your contact person where you will be during the hurricane.
4. Make arrangements for those with special needs and register with the county.
5. Practice and review your plan.
6. Determine in advance who will move your vehicle and/or where the vehicle will be parked. Positano Condominium Association, Inc. will not be responsible for any damage done to your car by a hurricane.

## **Owners Responsibilities:**

Prepare your unit for a hurricane as follows:

- Before hurricane season starts each year, you should review your insurance coverage with your agent.
- Find a hurricane caretaker who will be responsible for preparing your unit for a hurricane if you require assistance.
- Register your hurricane caretaker's name with the Property Manager.
- All units must remove all furniture and decorative wall fixtures from any open balcony or lanai.
- Close and firmly lock all sliding glass doors and windows.
- Place towels at the inside bottom of all doors leading to balconies and lanai to limit water intrusion.
- Prepare for the loss of utility services.
- Clean bathtubs and fill with water in case water lines are damaged. Use this water for cleaning and to refill toilet as needed.
- Turn off water at master valve.
- Elevators will be shut down when Hurricane Warning is issued.

## **Elderly Residents**

- Plan on taking care of yourself without electricity. Remember that the person taking care of you and your electrical devices may not be available right before and directly after the storm. If you are not available to do so, make other arrangements beforehand.
- If you are elderly, frail, or a person with disabilities and have friends or relatives that can help you with your housing and welfare, contact them now so that they can include your needs as part of their hurricane planning. They will need to include the time it will take for you to gather items you need and transportation time.
- Make a list of prescribed medications, and get a month's supply. You should also make copies of the prescriptions. If you normally require a special diet, make sure you take along three days' supply of it in containers that will be easy to open.
- Transfer to a manual wheelchair if you are in a battery operated one. You may not be able to recharge the batteries.
- Make sure you are wearing an I.D. bracelet with your name, medications, allergies and contact information.
- If someone in your home requires special attention or medical care, contact your county's "special needs centers". Call the Emergency Management Center for instructions.

## **Evacuation Planning**

Plan an evacuation route at the beginning of the hurricane season. When we receive orders that your home is in an evacuation area, **ALL PERSONS SHOULD LEAVE YOUR HOME AS SOON AS POSSIBLE AND PROCEED TO SHELTERS OR OTHER PREDETERMINED PLACES OF SAFETY.**

Reminders:

- Fully fuel your vehicle prior to evacuation.
- Activate your personal emergency evacuation plan. Evacuate using your chosen route. It is best to stay at a protected dwelling inland within your county.
- If you live alone, consider "teaming-up" with a neighbor to work out an evacuation plan.
- If you must go to a shelter, stay tuned to the radio or television for shelter information - shelter locations may change.
- Owners must turn off your water; remove furniture etc. from the lanai; lock sliding glass doors. Remove any loose objects such as furniture, planters, vulnerable lighting fixtures that are outside. Owners are responsible to secure their unit interiors.
- Have an evacuation plan for pets.
- Unplug small appliances that are not needed.
- Get extra supply of cash.
- If cell phone service is down, try texting instead. Often text messages will go through when phone calls will not.



- **Strongly consider the possibility of no electrical power after a hurricane. Power could be off for weeks with no air conditioning. Prepare to encounter snakes, insects, mold, inoperable elevators, no water and emergency vehicles not being able to get to you. If you choose to stay, you will be on your own.**

## **Regional Evacuation Scenarios for Collier County**

The following are the directions that Collier County suggests, if an evacuation is recommended:

### **Hurricane Making Landfall in Southwest Florida:**

- If you leave early, head north to central Florida.
- If you leave late head south and east to Southeast Florida.

### **Hurricane Making Landfall in the Tampa Bay Area:**

- If you leave early, head south then east to Southeast Florida. If you leave late, head south then east to South Florida or stay in county.

### **Hurricane Crossing the State from the East Coast on South Side of Region:**

- If you leave early, head north to Central Florida. If you wait until late, stay in county.

### **Hurricane Crossing the State from East Coast on the North Side of Region:**

- Stay in Collier County.

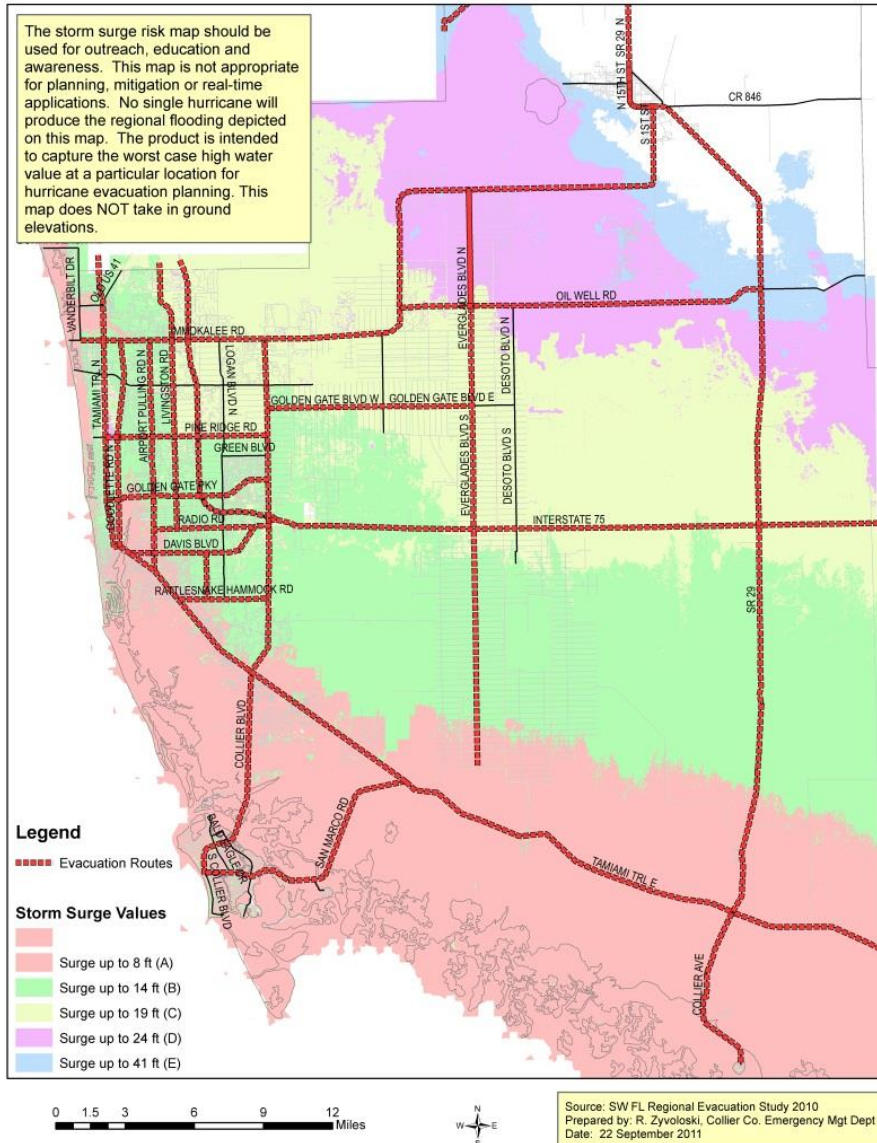
### **Hurricane Parallel to the West of the State:**

- Travel south then east to Southeast Florida

## Longitude and Latitude of Positano Place

The latitude is 26°12'14" N

The longitude is 81°45'1" W



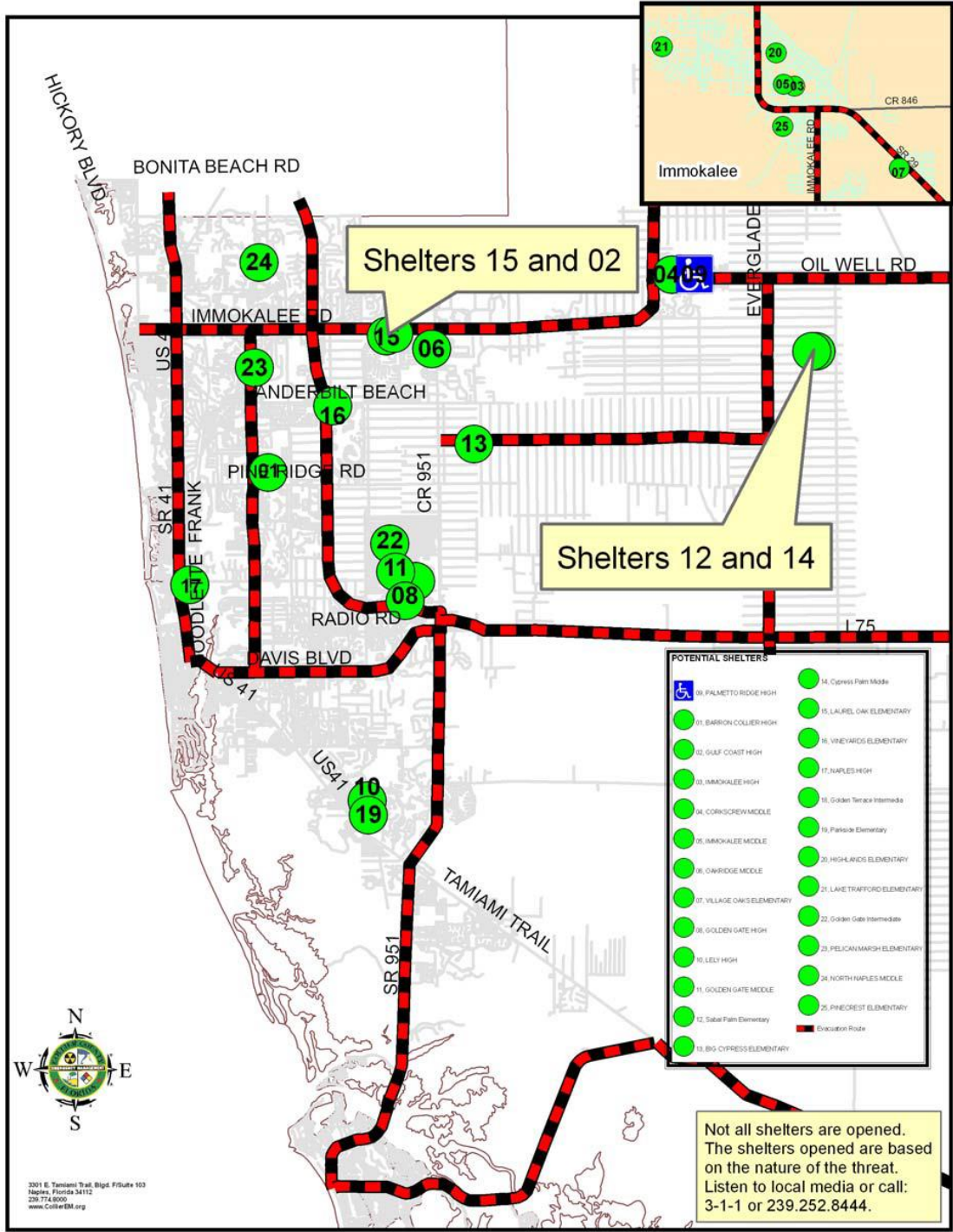
# ***HURRICANE PLANS SHOULD BE DEVELOPED LONG BEFORE A STORM IS APPROACHING***

## **Naples Area Shelters**

***During an actual disaster Collier County will list information about current shelters being opened. Please note, not all shelters will be opened when a storm threatens. The decisions on when to open and which shelters to open are made the day before hazardous conditions arrive. The following is a list of shelters that could potentially be opened:***

1. BARRON COLLIER HIGH, 5600 Cougar Dr, Naples
2. GULF COAST HIGH, 7878 Shark Way, Naples
3. IMMOKALEE HIGH, 701 Immokalee Drive, Immokalee
4. CORKSCREW MIDDLE, 1135 County Road 858, Naples
5. IMMOKALEE MIDDLE, 401 N. 9<sup>th</sup> St., Immokalee
6. OAKRIDGE MIDDLE, 14975 Collier Blvd., Naples
7. VILLAGE OAKS ELEMENTARY, 1601 Arbor Blvd W, Naples
8. GOLDEN GATE HIGH, 2925 Titan Way, Naples
- 9.
10. LELY HIGH School, 1 Lely High School Blvd., Naples
11. GOLDEN GATE MIDDLE, 2701 48<sup>th</sup> Terrace SW, Naples
12. SABAL PALM ELEMENTARY, 4095 18<sup>th</sup> Ave NE, Naples
13. BIG CYPRESS ELEMENTARY, 3250 Golden Gate Blvd. W., Naples
14. CYPRESS MIDDLE SCHOOL, 4255 18<sup>th</sup> Ave. NE, Naples
15. LAUREL OAK ELEMENTARY, 7800 Immokalee Rd., Naples
16. VINEYARDS ELEMENTARY, 6225 Arbor Blvd W., Naples
17. NAPLES HIGH, 1100 Golden Eagle Circle, Naples
18. GOLDEN TERRACE MIDDLE SCHOOL, 2711 44<sup>th</sup> Terrace SW, Naples
19. PARKSIDE ELEMENTARY, 5322 Texas Ave., Naples
20. HIGHLANDS ELEMENTARY, 1101 Lake Trafford Road, Immokalee
21. LAKE TRAFFORD ELEMENTARY, 3500 Lake Trafford Road, Immokalee
- 22.
23. PELICAN MARSH ELEMENTARY, 9480 Airport-Pulling Road, Naples
24. NORTH NAPLES MIDDLE, 13135 Learning Lane, Naples
25. PINECREST ELEMENTARY, 313 S 9<sup>th</sup> St., Immokalee
26. EDEN PARK ELEMENTARY, 3650 Westclox St., Immokalee
- 27.
28. MIKE DAVIS ELEMENTARY, 3215 Magnolia Pond Dr., Naples
- 29.
- 30.
31. NORTH COLLIER REGIONAL PARK, 15000 Livingston Rd, Naples
32. PALMETTO RIDGE HIGH SCHOOL, (SPECIAL NEEDS SHELTER) 1655 Victory Lane, Naples





Shelters 15 and 02

Shelters 12 and 14

POTENTIAL SHELTERS	
	04. PALMETTO RIDGE HIGH
	01. BARRON COLLIER HIGH
	02. GULF COAST HIGH
	03. IMMOKALEE HIGH
	04. CORNSCREW MIDDLE
	05. IMMOKALEE MIDDLE
	06. OAKRIDGE MIDDLE
	07. VILLAGE OAKS ELEMENTARY
	08. GOLDEN GATE HIGH
	09. LELY HIGH
	10. GOLDEN GATE MIDDLE
	12. Sabal Palm Elementary
	13. BIG CYPRESS ELEMENTARY
	14. Cypress Palm Middle
	15. LAUREL OAK ELEMENTARY
	16. VINEYARDS ELEMENTARY
	17. NAPLES HIGH
	18. Golden Terrace Intermediate
	19. Parkside Elementary
	20. HIGHLANDS ELEMENTARY
	21. LAKE TRAFFORD ELEMENTARY
	22. Golden Gate Intermediate
	23. PELICAN MARSH ELEMENTARY
	24. NORTH NAPLES MIDDLE
	25. PINECREST ELEMENTARY
	Evacuation Route

Not all shelters are opened. The shelters opened are based on the nature of the threat. Listen to local media or call: 3-1-1 or 239.252.8444.

3301 S. Tamiami Trail, Blvd. 103  
 Naples, Florida 34112  
 239.714.6000  
 www.CollierEMA.org

## **Current Storm Information**

National Weather Service:

[www.weather.gov](http://www.weather.gov)

National Hurricane Center:

[www.nhc.noaa.gov](http://www.nhc.noaa.gov)

## **Historical Storm Information**

National Climatic Data Center:

[www.ncdc.noaa.gov](http://www.ncdc.noaa.gov)

NOAA Coastal Services Center:

[www.csc.noaa.gov](http://www.csc.noaa.gov)

## **Emergency/Preparedness Information**

American Red Cross:

[www.redcross.org](http://www.redcross.org)

FEMA:

[www.fema.gov](http://www.fema.gov)

## **Other Information**

NOAA Weather Radio All Hazards:

[www.nhc.noaa.gov/gis/](http://www.nhc.noaa.gov/gis/)

Hurricane Tracking Charts:

[www.weather.gov/os/hurricane/](http://www.weather.gov/os/hurricane/)

Naples Pier Live Webcam

<http://naplespanorama.org/>

## **Helpful Websites:**

[www.collierem.org](http://www.collierem.org)

[www.fl511.com](http://www.fl511.com)

[www.floridadisaster.org](http://www.floridadisaster.org)

[www.positanoplaceatnaples.com](http://www.positanoplaceatnaples.com)

## ATTACHMENT A

# SUGGESTED OWNERS HURRICANE SUPPLY CHECKLIST

HURRICANE SUPPLY KIT CHECKLIST (maintain a two week supply for each person in your home of each of the following items):

- Baby Supplies:** Formula, bottles, powdered milk, jarred/canned baby foods, diapers, towelettes and special medications.
- Food Supplies:** Purchase foods that require no refrigeration and little preparation such as: ready-to-eat canned food, canned juices, milk/parmalat, soup, soft drinks, instant coffee/tea.
- Medical Supplies:** First aid kit, rubbing alcohol, aspirin, non-aspirin pain reliever, anti-diarrheals and antacids, extra prescription medication (especially for those with heart problems and diabetics). Ask your physician or pharmacist how to store prescription medication.
- Other Supplies:** Wind-up or battery-operated radios, flashlights, non-electric can opener, extra batteries, ABC-rated fire extinguisher in a small canister, portable cooler, absorbent towels, plastic trash bags, wind-up or battery operated clock, extra set of keys, screw driver, hammer, photocopies of prescriptions, photo identification, proof of occupancy of residence (utility bills), medical history and information.
- Personal Items:** Toilet paper, towels, soap, shampoo, personal and feminine hygiene products, denture needs, contact lenses and an extra pair of eye glasses, sun protection and insect repellent
- Water:** A minimum of seven gallons of water per person (1/2 gallon for drinking and 2 gallons for bathing, tooth brushing, etc.). Store water in clean plastic containers.

***HURRICANE PLANS SHOULD BE DEVELOPED  
LONG BEFORE A STORM IS APPROACHING***

### **Post Hurricane**

- Return to Positano when public notification is given by Collier County Emergency Services that it is safe to return to the area and flooding in the area of Positano Place is not an issue.
- Be aware of possible downed power lines and other debris which may pose real dangers/hazard to you and your pets (snakes, raccoons, alligators, etc).
- **Owners, please refrain from calling the Property Management Company. This drastically interferes with operations. We will notify you after the storm with an assessment as soon as we are able. This may take at least two to five days. Check the website [www.positanoplaceatnaples.com](http://www.positanoplaceatnaples.com) for updates.**